

# PASTA GALA

700 m<sup>2</sup> available



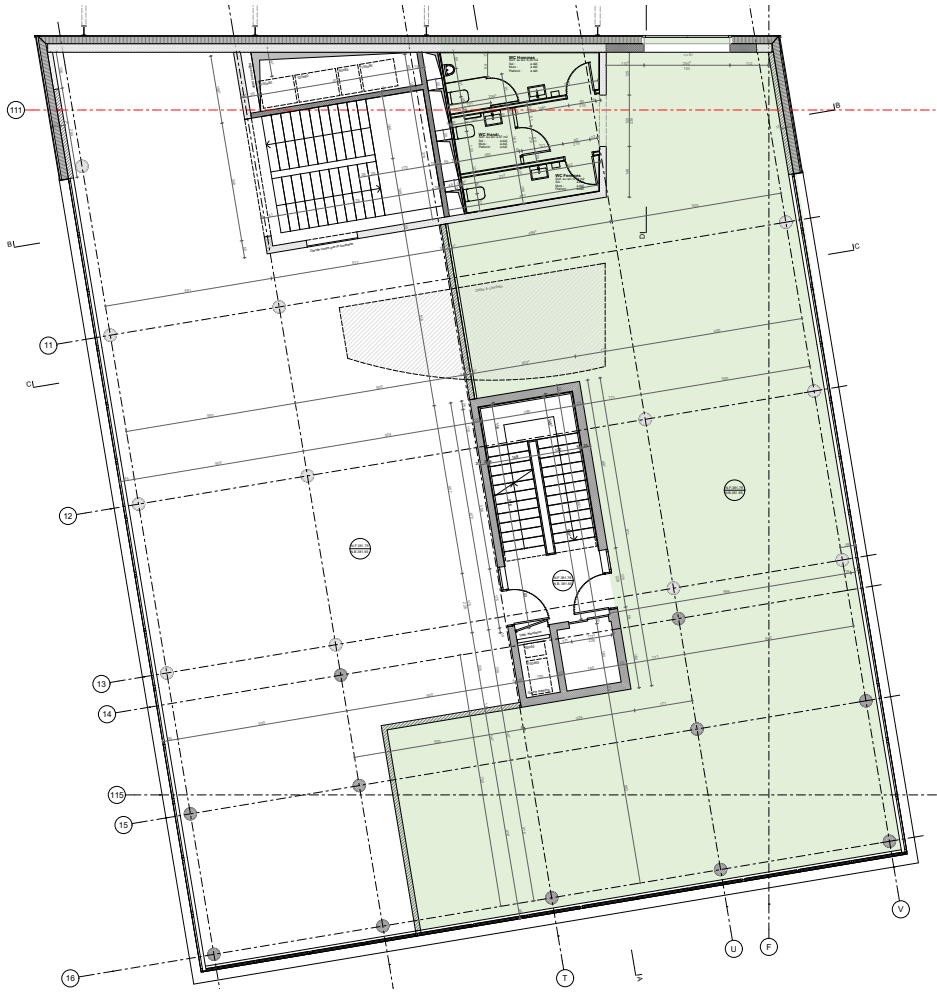
EUROPEAN HEADQUARTER

MORGES Railway station  
less than 5' walk

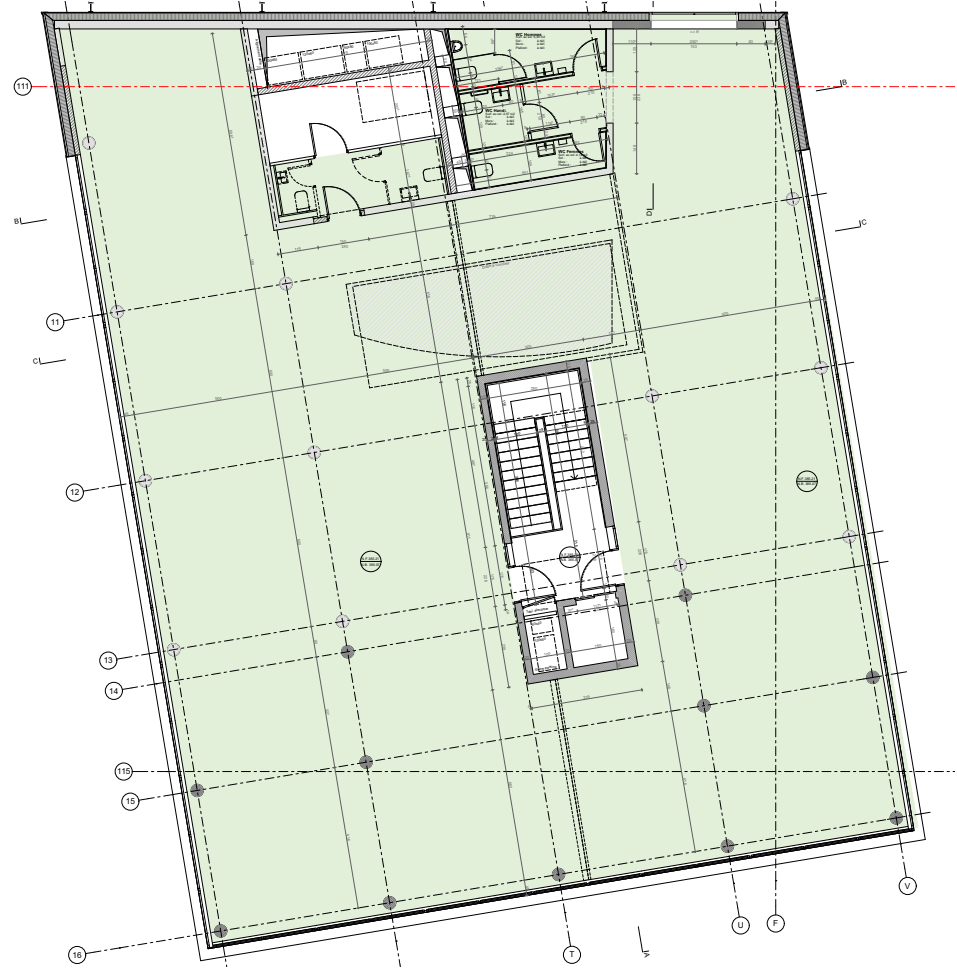


# PASTA GALA

plans



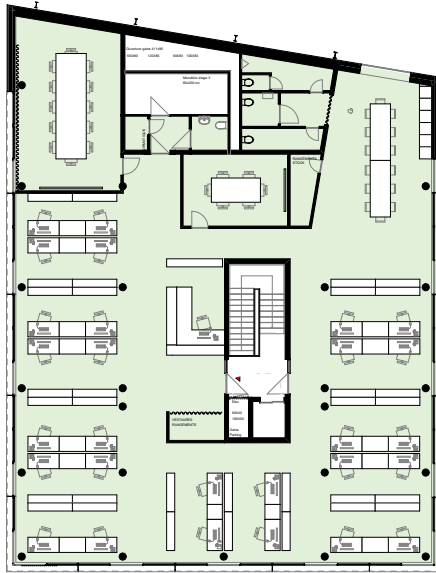
**1st Floor**  
240 m<sup>2</sup>



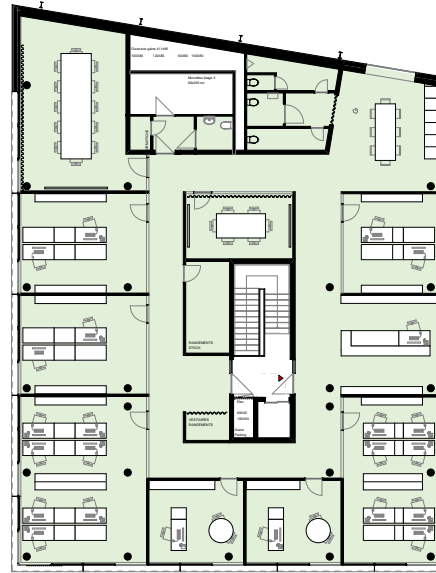
**2nd Floor**  
470 m<sup>2</sup>

# PASTA GALA

examples of space planning

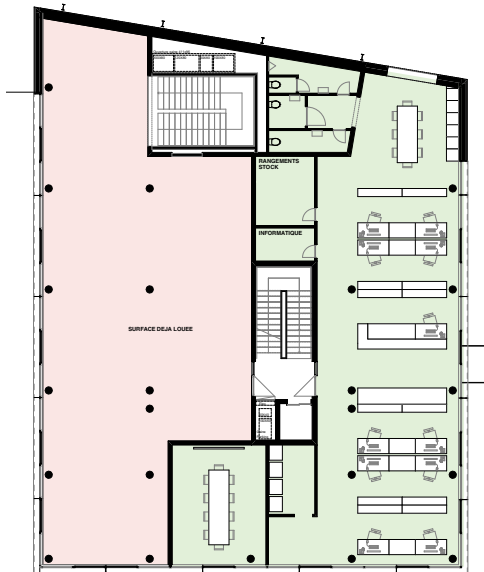


ETAGE 2 - VARIANTE 1

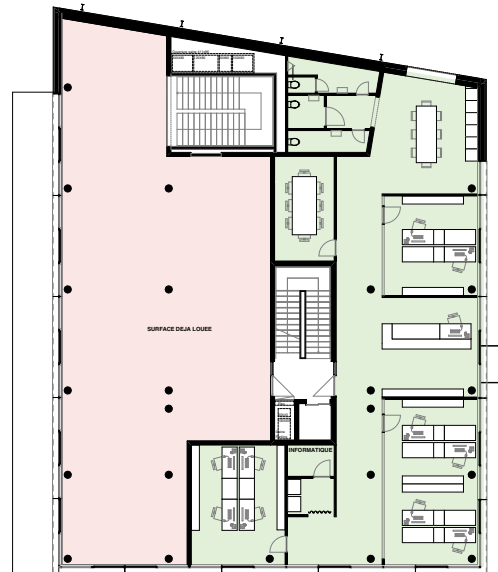


ETAGE 2 - VARIANTE 2

**2nd Floor**  
470 m<sup>2</sup>



ETAGE 1 - VARIANTE 1

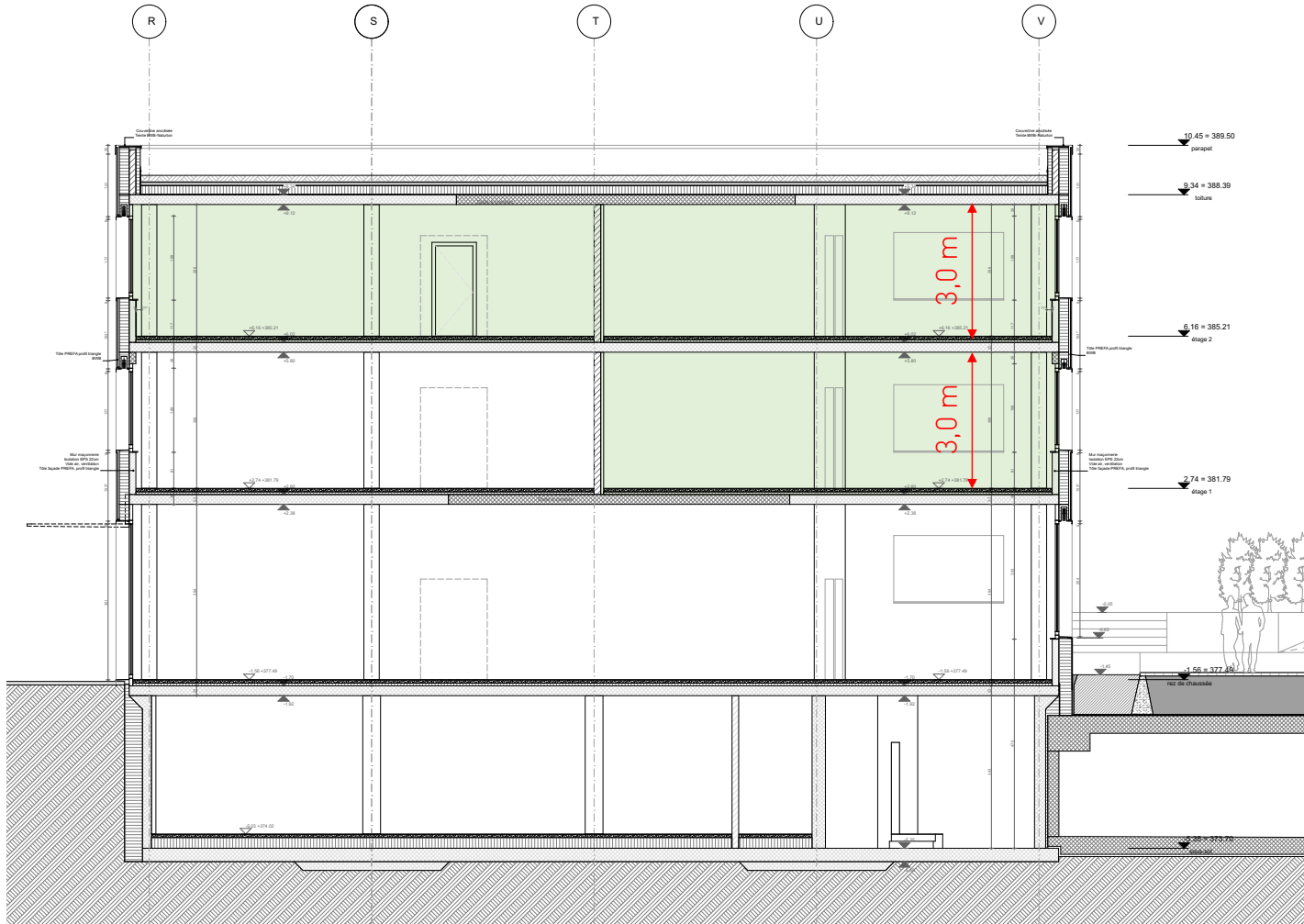


ETAGE 1 - VARIANTE 2

**1st Floor**  
240 m<sup>2</sup>

# PASTA GALA

section



**3m of free height under slab**

**700 m2 available**

## **semi-equipped delivery**

- False floor without carpet
- Plasterboard and painting on wall
- HVAC distribution by the ceiling (office use)
- Electricity distribution (office use)
- Fully equipped toilets

**Available in September 2020**

## **Many advantages**

- Possibility to rent parking spaces in the underground car park located under the courtyard
- On-site restaurant open to employees, located on the ground floor of the INCYTE building
- Less than 5 minutes walk from the train station and the lake
- Many amenities nearby
- 3000 m<sup>2</sup> of courtyard for the use of employees

